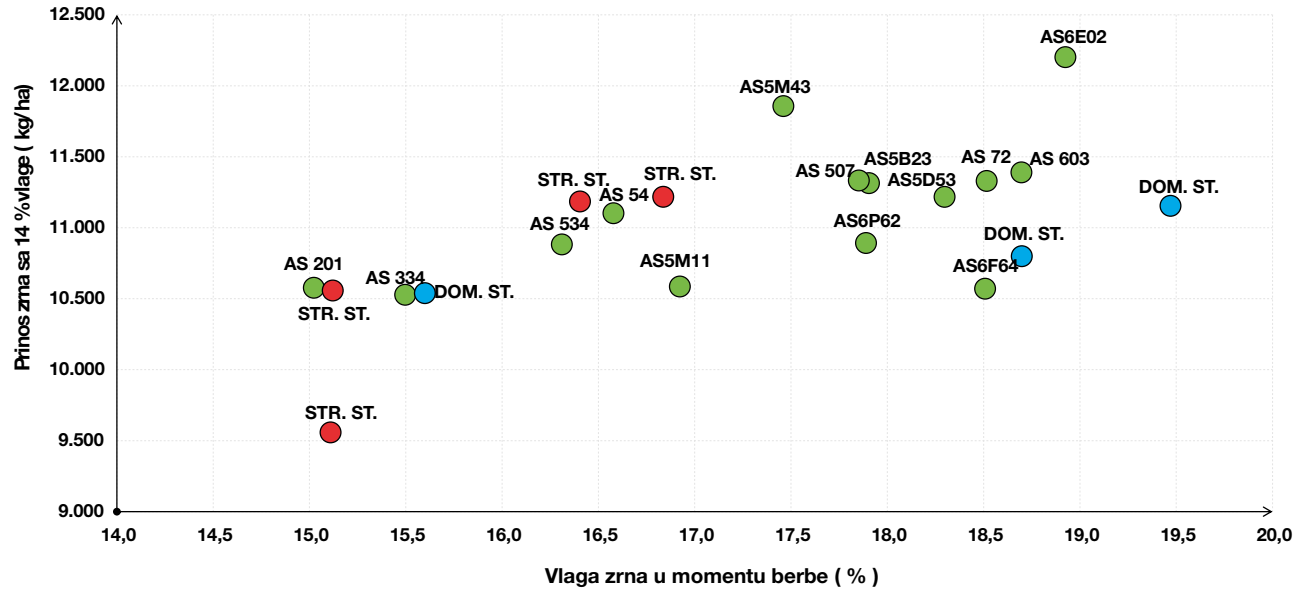


Rezultati STRIP ogleda kukuruza u 2016. godini

LOKALITET	VRBAS		LUKIČEVO		ŠIMANOVCI		LIPAR		PANČEVO		KIKINDA	
HIBRIDI	VLAGA (%)	PRINOS (T/HA)	VLAGA (%)	PRINOS (T/HA)	VLAGA (%)	PRINOS (T/HA)	VLAGA (%)	PRINOS (T/HA)	VLAGA (%)	PRINOS (T/HA)	VLAGA (%)	PRINOS (%)
AS 334	15.82	10.25	15.4	10.25	13.7	10.53	16.8	8.98	13.3	13.36	15.55	10.61
STRANI STANDARD	15.49	10.41	15.7	11.22	14.3	10.28	14.7	9.61	15.6	11.29	14.75	10.93
AS 201	15.55	12.33	15.3	10.84	14.1	10.33	14.5	9.28	15.6	11.53	14.50	10.74
STRANI STANDARD	16.01	12.32	16	9.21	12.7	9.26	15.1	6.52	13.1	10.67	14.70	10.12
DOMAĆI STANDARD	16.29	12.34	15.9	10.25	13.3	12.10	15.0	9.47	14.6	10.40	15.15	11.03
AS 534	17.12	11.70	16	10.56	13.3	11.98	16.0	9.91	16.4	10.89	14.40	10.95
AS 54	16.27	12.81	17.1	9.26	12.9	11.18	17.3	10.77	16.8	12.82	14.80	10.77
AS5M11	17.41	11.09	17.4	9.61	13.1	11.01	16.5	9.50	18.3	12.14	15.45	10.03
AS5M43	17.32	13.81	18.8	10.95	15.0	11.85	17.4	11.61	17.2	12.38	14.95	11.42
AS5B23	17.50	13.76	18.9	10.82	14.7	11.43	20.3	9.91	0.0	0.00	15.25	11.31
STRANI STANDARD	16.81	13.93	15.9	11.15	14.0	9.80	20.2	10.09	15.0	11.77	15.15	12.36
AS5D53	19.08	13.33	18.3	10.20	13.3	11.79	20.0	9.57	17.5	12.72	16.30	11.61
STRANI STANDARD	17.01	11.55	17.8	10.88	16.0	9.10	17.8	11.62	14.6	12.06	15.40	12.47
AS 507	18.18	12.01	18.9	9.64	12.4	11.97	19.9	12.25	16.7	12.07	15.90	11.66
DOMAĆI STANDARD	18.39	11.02	20.7	8.94	15.5	12.01	21.0	10.06	15.2	10.25	16.30	11.53
AS 603	18.62	10.59	18.5	10.93	0.0	0.00	20.1	10.93	16.7	11.50	16.15	12.73
AS 72	18.38	13.16	20.8	9.97	15.4	13.08	19.9	11.32	17.6	11.48	17.00	10.57
AS6P62	17.94	12.84	17.9	9.57	15.1	11.87	19.6	10.80	16.9	10.81	16.55	10.84
AS6F64	17.99	10.79	19	10.01	14.6	12.31	22.1	10.60	15.9	9.01	17.70	10.77
AS6E02	18.58	12.96	19.6	11.17	14.2	11.57	21.7	11.44	18.6	14.35	16.50	11.43
DOMAĆI STANDARD	19.78	11.120	21.4	10.72	14.7	10.70	23.2	10.77	17.6	12.11	17.70	12.07
PROSEK OGLEDA	17.4	12.10	17.9	10.29	13.4	10.67	18.5	10.24	15.4	11.12	15.7	11.23

NOVI SAD		SVILAJNAC		KLIČEVAC		SUBOTICA		ČUPRIJA		PROSEK	
VLAGA (%)	PRINOS (T/HA)	VLAGA (%)	PRINOS (T/HA)	VLAGA (%)	PRINOS (T/HA)	VLAGA (%)	PRINOS (T/HA)	VLAGA (%)	PRINOS (T/HA)	VLAGA (%)	PRINOS (%)
15.3	11.96	18.1	10.54	16.9	10.53	14.4	9.55	15.2	9.25	15.5	10.53
15.1	12.34	17.1	8.61	15.7	11.20	12.7	9.81	15.2	10.42	15.1	10.56
15.2	11.62	17.4	9.61	16.6	11.08	12.5	9.63	14.0	9.37	15.0	10.58
15.6	11.74	16.9	9.32	15.8	11.01	15.5	4.61	14.8	10.35	15.1	9.56
16.3	11.82	18.1	8.50	15.7	10.85	14.6	8.28	15.2	10.88	15.6	10.54
17.2	11.89	19.1	11.11	16.0	10.79	18.5	8.96	15.4	10.98	16.3	10.88
17.2	11.86	18.8	11.13	17.0	12.24	18.4	9.29	15.8	10.00	16.6	11.10
16.9	10.53	20.0	10.63	17.0	12.06	18.2	8.93	15.9	10.91	16.9	10.59
17.8	11.44	21.1	12.95	16.9	12.90	19.0	9.47	16.6	11.65	17.5	11.86
17.8	11.95	21.3	11.77	18.1	11.90	18.5	9.97	16.7	10.33	17.9	11.31
16.7	12.63	19.4	10.11	16.7	11.00	15.8	10.43	14.8	9.76	16.4	11.18
17.4	12.18	21.7	10.73	18.1	12.24	21.4	9.98	18.2	9.05	18.3	11.22
16.7	11.42	20.5	10.90	16.9	12.77	16.7	10.19	15.8	10.45	16.8	11.22
17.4	12.01	22.3	11.62	17.5	12.51	21.2	10.79	16.0	8.14	17.9	11.33
17.2	11.52	22.9	11.85	18.5	9.99	21.4	11.08	18.6	10.56	18.7	10.80
17.2	12.55	22.4	12.39	18.1	11.89	21.6	10.41	17.6	9.98	18.7	11.39
18.0	11.41	22.6	11.25	16.7	12.63	20.7	10.55	16.6	9.21	18.5	11.33
17.4	11.49	22.2	10.66	17.9	11.08	20.0	10.03	15.3	9.82	17.9	10.89
17.7	11.11	22.5	9.98	18.8	11.47	21.6	10.37	15.7	9.88	18.5	10.57
18.0	11.75	23.6	12.69	18.9	13.30	21.8	11.92	16.7	11.65	18.9	12.20
18.1	12.24	23.8	10.18	18.1	11.41	21.0	11.55	18.8	9.81	19.5	11.15
17.0	11.78	20.6	10.79	17.2	11.66	18.4	9.80	16.1	10.12	17.1	10.89

Rezultati STRIP ogleda kukuruza 2016. godine





AS
Hibridi

REZULTATI DEMO OGLEDA KUKURUZA U 2016. GODINI

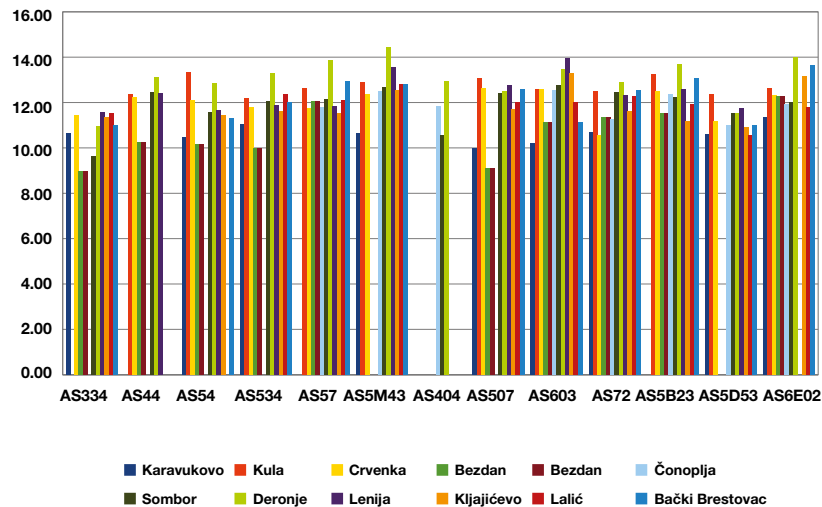
Prinos zrna po hibridima i lokalitetima sa 14 % vlage (t/ha)

PROIZVOĐAČ	LOKACIJA	HIBRID													PROSEK
		AS 334	AS 44	AS 54	AS 534	AS 57	AS 5M43	AS 404	AS 507	AS 603	AS 72	AS 5B23	AS 5D53	AS 6E02	
PSS SOMBOR	KARAVUKOVO	10.65		10.47	11.03		10.65		10.01	10.22	10.69		10.62	11.33	10.63
MILE LATINKIN	KULA		12.36	13.34	12.17	12.65	12.88		13.05	12.57	12.50	13.25	12.35	12.65	12.71
TOMISLAV KUKIĆ	CRVENKA	11.45	12.22	12.09	11.79	11.73	12.38		12.64	12.61	10.56	12.49	11.15	12.34	11.95
STIPAN FIRANJ	BEZDAN	8.95	10.26	10.16	9.98	12.04			9.12	11.14	11.35	11.51		12.26	11.22
GORAN KOSOVAC	ČONOPLJA					11.79	12.51	11.83		12.54	11.25	12.37	11.00	11.94	11.89
ŠIMA FIRANJ	SOMBOR	9.64	12.45	11.57	12.04	12.13	12.67	10.56	12.41	12.75	12.44	12.22	11.51	12.01	12.46
DEJAN MARIĆ	DERONJE	10.94	13.13	12.86	13.31	13.88	14.42	12.94	12.48	13.46	12.88	13.68	11.52	14.02	12.74
DRAGAN BIKAR	LENIJA	11.59	12.43	11.64	11.88	11.83	13.54		12.76	13.97	12.32	12.57	11.77		12.12
MIRKO POPOVIĆ	KLJAJIĆEVO	11.36		11.45	11.62	11.54	12.55		11.70	13.31	11.60	11.18	10.93	13.16	11.89
M. HRNČIAR	LALIĆ	11.55			12.37	12.12	12.80		12.00	12.01	12.26	11.93	10.54	11.81	12.07
MILOŠ ŠORAK	B. BRESTOVAC	11.02		11.33	12.02	12.95	12.79		12.60	11.12	12.54	13.05	11.01	13.64	12.06
PROSEK		10.79	12.14	11.66	11.82	12.26	12.72	11.78	11.87	12.34	11.85	12.42	11.24	12.51	11.98

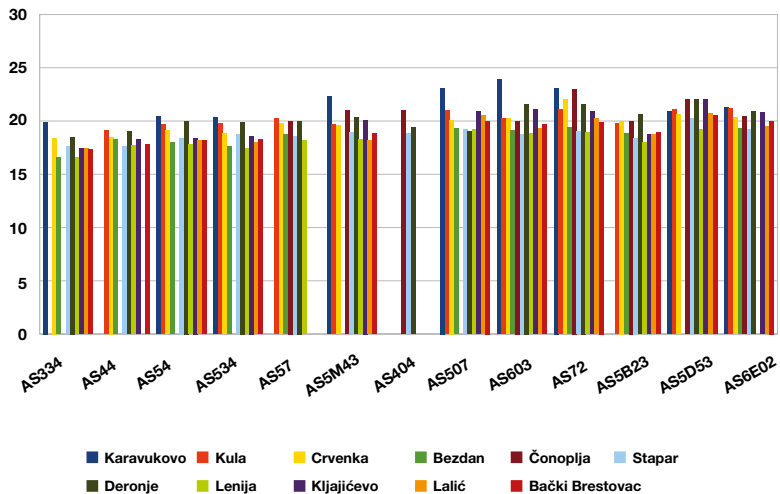
Najbolji hibrid
u ogledu

Region: Bačka
Promoter: Milenko Abadžin
Telefon: 062 80 40 251

Prinos zrna sa 14% vlage (t/ha)



Vlaga zrna u momentu berbe po hibridima i lokalitetima (%)



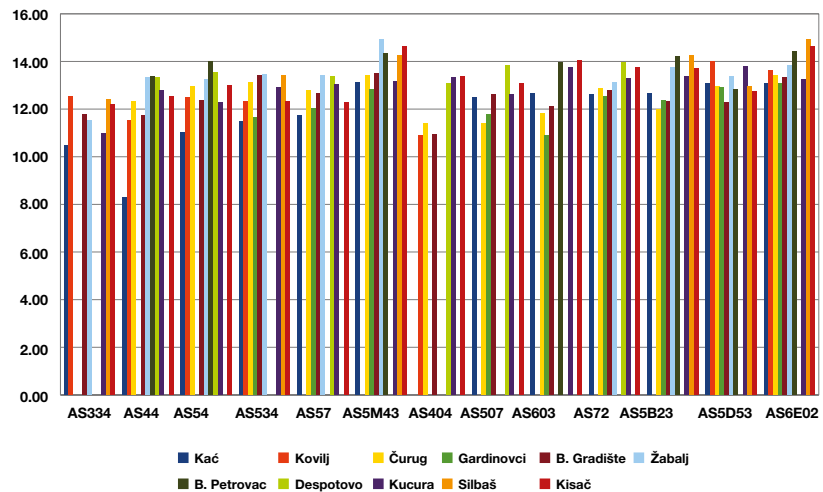
Prinos zrna po hibridima i lokalitetima sa 14 % vlage (t/ha)

PROIZVOĐAČ	LOKACIJA	HIBRID													PROSEK
		AS 334	AS 44	AS 54	AS 534	AS 57	AS 5M43	AS 404	AS 507	AS 603	AS 72	AS 5B23	AS 5D53	AS 6E02	
LJUBOMIR ISAKOV	KAĆ	10.49	8.30	11.02	11.48	11.74	13.11		12.47	12.65	12.61	12.67	13.06	13.08	11.89
K. SENTIVANAC	KOVILJ	12.52	11.53	12.50	12.31			10.88					14.01	13.61	12.48
MILOŠ PERIĆ	ČURUG		12.34	12.95	13.13	12.79	13.40	11.39	11.41	11.81	12.88	12.00	12.94	13.39	12.54
RADE OBRENOV	GARDINOVC				11.64	12.02	12.82		11.79	10.91	12.53	12.37	12.92	13.09	12.23
STEVA IVANOV	B. GRADIŠTE	11.76	11.71	12.35	13.40	12.64	13.49	10.95	12.63	12.10	12.80	12.31	12.30	13.34	12.44
ČEDOMIR RODIĆ	ŽABALJ	11.51	13.32	13.22	13.46	13.43	14.94				13.10	13.75	13.38	13.84	13.40
LEKAR DANIJEL	B. PETROVAC		13.39	13.98			14.34			13.97		14.21	12.84	14.43	13.88
S. JOVANOVIĆ	DESPOTOVO		13.31	13.53		13.35		13.08	13.82		13.94				13.51
NEBOJŠA VASIĆ	KUCURA	10.99	12.80	12.29	12.90	13.04	13.18	13.32	12.60	13.75	13.29	13.37	13.78	13.24	12.97
R. STANKOV	SILBAŠ	12.40			13.40		14.27					14.26	12.96	14.92	13.70
V. FRANCISTI	KISAČ	12.18	12.52	13.01	12.33	12.27	14.62	13.37	13.06	14.05	13.75	13.71	12.72	14.62	13.25
PROSEK		11.69	12.14	12.76	12.67	12.66	13.79	12.17	12.54	12.75	13.11	13.18	13.09	13.76	12.93

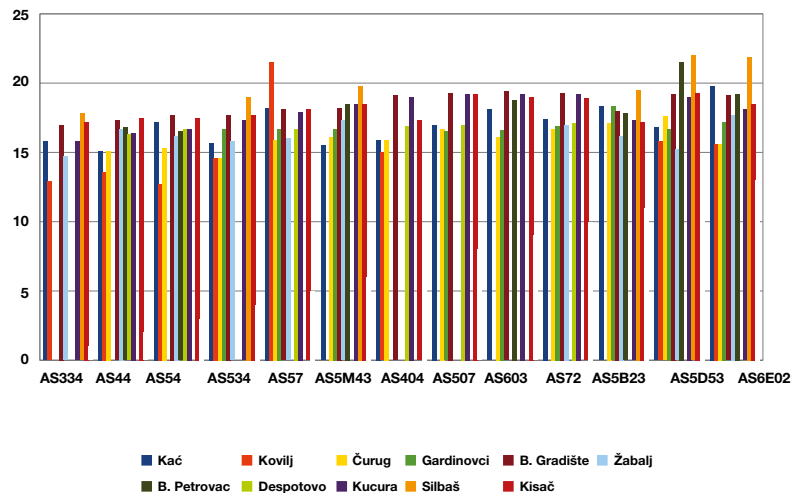
Najbolji hibrid
u ogledu

Region: Bačka
Promoter: Nikola Korać
Telefon: 062 88 02 418

Prinos zrna sa 14% vlage (t/ha)




Vlaga zrna u momentu berbe po hibridima i lokalitetima (%)



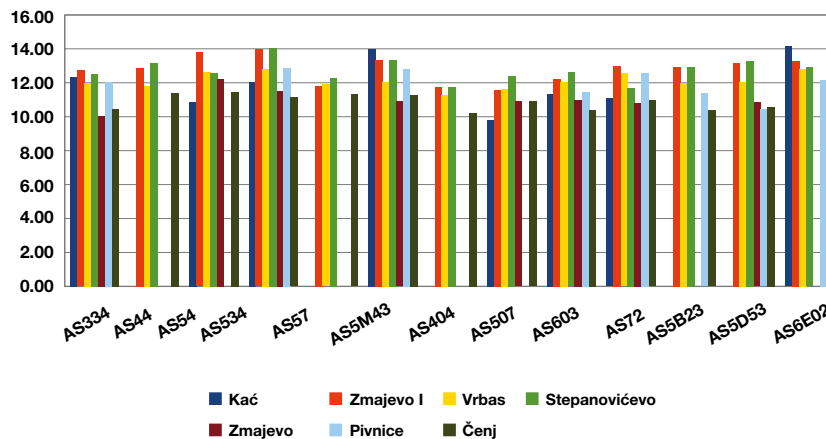
Prinos zrna po hibridima i lokalitetima sa 14 % vlage (t/ha)

PROIZVOĐAČ	LOKACIJA	HIBRID													PROSEK
		AS 334	AS 44	AS 54	AS 534	AS 57	AS 5M43	AS 404	AS 507	AS 603	AS 72	AS 5B23	AS 5D53	AS 6E02	
PSS NOVI SAD	KAĆ	12.36		10.87	12.05		13.97		9.81	11.32	11.08			14.14	11.95
B. RADOSLAV	ZMAJEVO I	12.72	12.86	13.79	13.96	11.80	13.32	11.76	11.56	12.23	12.97	12.94	13.19	13.27	12.80
PSS VRBAS	ZMAJEVO II	10.04		12.22	11.50		10.90		10.90	11.01	10.80		10.83		11.02
R. RADOSLAV	VRBAS	11.99	11.82	12.62	12.81	11.90	12.04	11.30	11.65	12.05	12.55	11.99	12.07	12.81	12.12
PEPIĆ MILAN	STEPANOVIĆEVO	12.53	13.16	12.58	14.04	12.26	13.32	11.73	12.38	12.60	11.72	12.94	13.30	12.90	12.73
VAGALA LJUBO	PIVNICE	12.02			12.87		12.80			11.45	12.56	11.36	10.42	12.17	11.96
B. ALEKSANDAR	ČENEJ	10.43	11.41	11.44	11.14	11.31	11.27	10.22	10.89	10.37	10.95	10.37	10.55	11.17	10.89
PROSEK		11.73	12.31	12.25	12.62	11.82	12.52	11.25	11.20	11.58	11.80	11.92	11.73	12.75	11.92

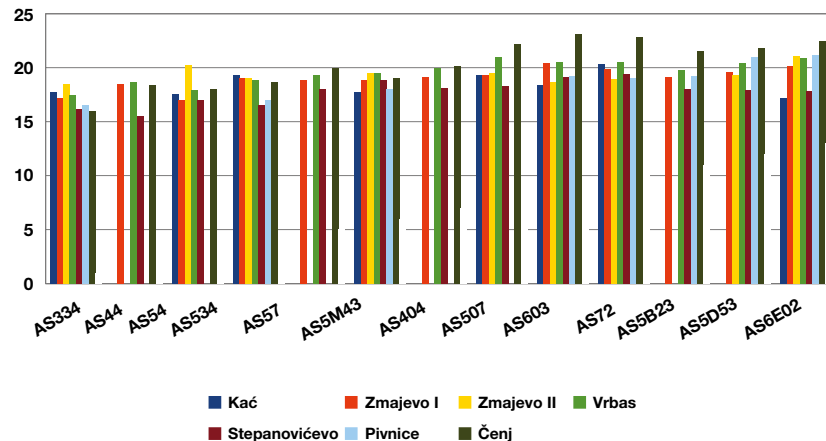
 Najbolji hibrid u ogledu

Region: Bačka
 Promoter: Radovan Begović
 Telefon: 062 80 40 247

Prinos zrna sa 14% vlage (t/ha)



Vlaga zrna u momentu berbe po hibridima i lokalitetima (%)



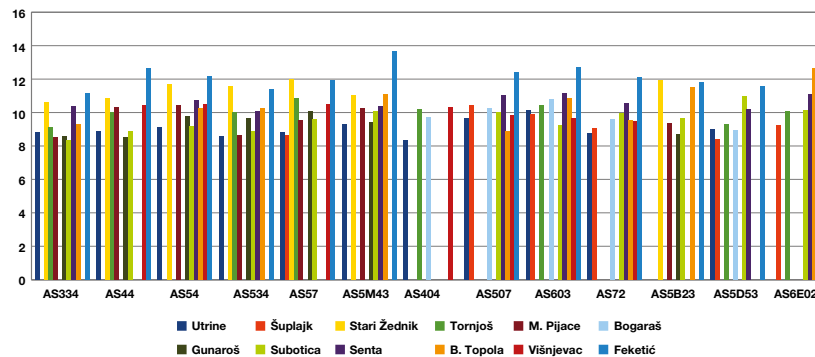
Prinos zrna po hibridima i lokalitetima sa 14 % vlage (t/ha)

PROIZVOĐAČ	LOKACIJA	HIBRID													PROSEK
		AS 334	AS 44	AS 54	AS 534	AS 57	AS 5M43	AS 404	AS 507	AS 603	AS 72	AS 5B23	AS 5D53	AS 6E02	
ČERNAK JANOŠ	UTRINE	8.81	8.91	9.15	8.59	8.81	9.27	8.36	9.68	10.16	8.77		9.02		9.05
SALAI GEZA	ŠUPLAJK					8.65			10.46	9.92	9.08		8.41	9.25	9.30
DUDAŠ GEZA	S.ŽEDNIK	10.59	10.85	11.69	11.56	11.97	11.04					11.91			11.37
ROŽA OLIVER	TORNJOŠ	9.09	10.05		10.00	10.85		10.20		10.41			9.30	10.09	10.00
KOVAČ SALBOŠ	M.PIJACE	8.55	10.29	10.41	8.65	9.52	10.23					9.34			9.57
ZABOŠ ŠANDOR	BOGARAS							9.73	10.28	10.77	9.57		8.95		9.86
BRAŠNJO IMRE	GUNAROŠ	8.61	8.55	9.80	9.68	10.07	9.44					8.69			9.26
VUČIĆ MARKO	SUBOTICA	8.33	8.90	9.17	8.90	9.62	10.07		9.99	9.21	9.95	9.68	10.98	10.12	9.58
PSS SENTA	SENTA	10.38		10.73	10.10		10.35		11.03	11.17	10.56		10.19	11.06	10.62
PSS B. TOPOLA	B. TOPLA	9.30		10.26	10.27		11.09		8.87	10.83	9.51	11.52		12.68	10.48
T. NORBERT	VIŠNJEVAC		10.44	10.52		10.47		10.32	9.85	9.63	9.48				10.10
TOT AKOŠ	FEKETIĆ	11.15	12.65	12.15	11.38	11.95	13.65		12.39	12.72	12.14	11.84	11.59	12.20	12.15
PROSEK		9.42	10.08	10.43	9.90	10.21	10.64	9.65	10.32	10.54	9.88	10.49	9.78	10.90	10.11

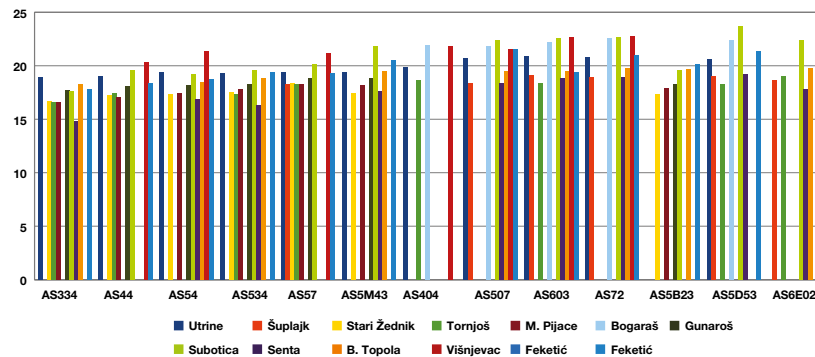
Najbolji hibrid
u ogledu

Region: Bačka
Promoter: Žarko Fermanović
Telefon: 062 80 40 253

Prinos zrna sa 14% vlage (t/ha)



Vlaga zrna u momentu berbe po hibridima i lokalitetima (%)



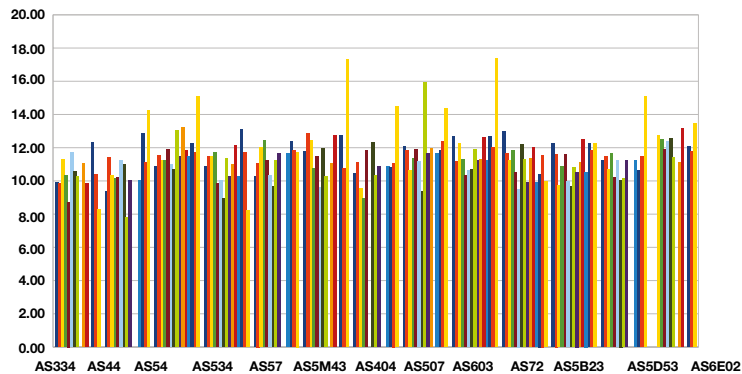
Prinos zrna po hibridima i lokalitetima sa 14 % vlage (t/ha)

PROIZVOĐAČ	LOKACIJA	HIBRID													PROSEK
		AS 334	AS 44	AS 54	AS 534	AS 57	AS 5M43	AS 404	AS 507	AS 603	AS 72	AS 5B23	AS 5D53	AS 6E02	
DRAGAN RANKOVIĆ	BAVANIŠTE I	9.91	9.36	10.87	10.87	10.26	11.79	10.48	12.09	12.65	12.96	12.27	11.25		11.23
MI. STAMENKOVIĆ	BAVANIŠTE II	9.87	11.43	11.55	11.49	11.08	12.83	11.09	11.84	11.19	11.67	11.62	11.48		11.43
SINIŠA STOJAKOV	JASENOVO	11.26	10.34	11.22	11.47	12.04	12.42	9.54	10.64	12.28	11.21	9.71	10.66	12.71	11.19
BRANA KORAĆ	IZBIŠTE	10.33	10.13	11.25	11.70	12.42	10.77	8.92	11.32	11.27	11.82	10.90	11.68	12.50	11.15
SLOBODAN KUZMAN	KAČAREVO	8.73	10.21	11.92	9.85	11.25	11.48	11.83	11.91	10.34	10.49	11.62	10.23	11.87	10.90
MILAN SLOVIĆ	DOBRICA	11.71	11.25	11.02	10.02	10.33	9.61	11.251	11.20	10.65	9.51	9.95	11.21	12.35	10.73
ZLATKO BRKIĆ	KAJTASOVO	10.57	10.96	10.67	8.92	9.67	11.95	12.29	9.37	10.66	12.20	9.69	10.06	12.55	10.73
PAVEL BRCKA	KOVAČICA I	10.27	7.79	13.05	11.36	11.25	10.29	10.30	15.94	11.92	11.30	10.80	10.14	11.43	11.22
HRIJEŠIK ADAM	KOVAČICA II			12.23		13.38	12.46					12.64	12.96	13.96	12.94
ŽELJKO TOMAN	KOVAČICA III	8.28	14.25	15.06	8.23	11.74	17.31	14.46	14.37	17.37	9.96	12.24	15.11	13.47	13.22
PSS KOVIN	KOVIN	9.87		11.85	12.16		12.72		.	12.60	12.01	12.48		13.18	12.11
PSS TAMIŠ	PANČEVO	11.07		13.24	11.00		11.05		11.95	11.31	11.37	11.10		11.13	11.47
FERENC ERES	SKORENOVAC	12.32	12.83	12.23	13.09	12.39	12.71	10.82	11.84	12.65	10.42	12.28	10.63	12.07	12.02
SAVICA MILANOV	B. PALANKA	10.39	11.11	11.69	11.69	11.82	10.76	11.08	12.37	11.99	11.56	11.82	11.45	11.78	11.50
IVAN ODADŽIĆ	SEFKERIN		10.04	11.46	10.29	11.63		10.87	11.65	11.22	9.92	10.54	11.22		10.88
PROSEK		10.35	10.81	11.95	10.87	11.48	12.01	11.06	12.04	12.01	11.17	11.31	11.39	12.42	11.52

Najbolji hibrid
u ogledu

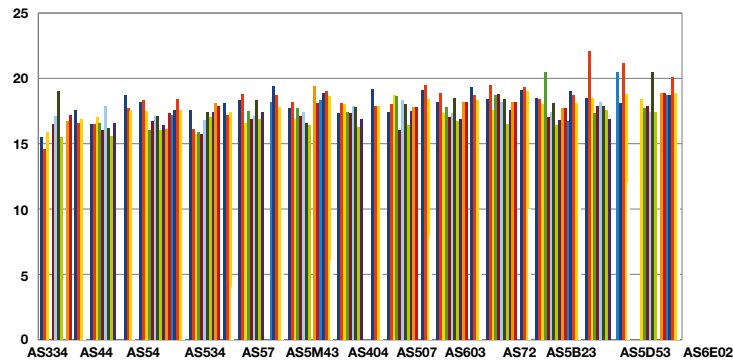
Region: Banat
Promoter: Ivan Milojević
Telefon: 062 80 57 837

Prinos zrna sa 14% vlage (t/ha)



■ Bavanište I ■ Bavanište II ■ Jasenovo ■ Izbište ■ Kačarevo
 ■ Dobrica ■ Kajtasovo ■ Kovačica I ■ Sefkerin ■ Pančevo
 ■ Kovin ■ Sefkerin ■ Skorenovac ■ B. Palanka ■ Kovačica III

Vlaga zrna u momentu berbe po hibridima i lokalitetima (%)



■ Bavanište I ■ Bavanište II ■ Jasenovo ■ Izbište
 ■ Kačarevo ■ Dobrica ■ Kajtasovo ■ Kovačica I
 ■ Sefkerin ■ Pančevo ■ Kovin ■ Sefkerin ■ Skorenovac ■ B. Palanka ■ Kovačica II
 ■ Kovačica III

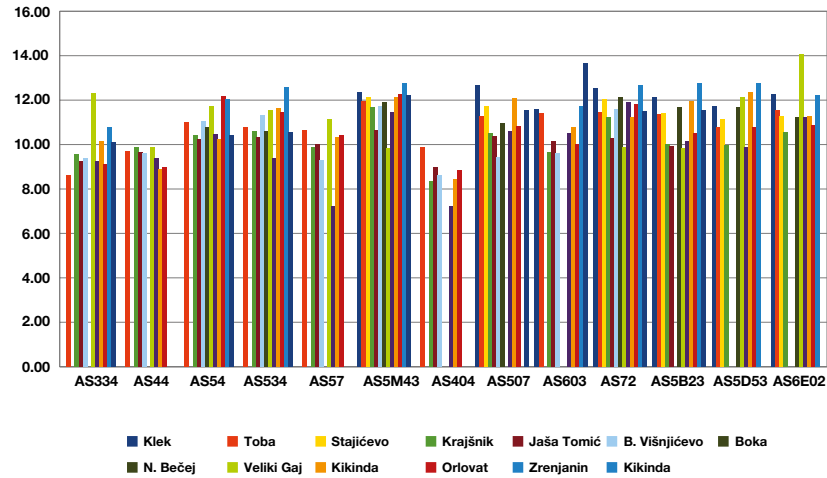
Prinos zrna po hibridima i lokalitetima sa 14 % vlage (t/ha)

PROIZVOĐAČ	LOKACIJA	HIBRID													PROSEK
		AS 334	AS 44	AS 54	AS 534	AS 57	AS 5M43	AS 404	AS 507	AS 603	AS 72	AS 5B23	AS 5D53	AS 6E02	
D. DOROŠKOV	KLEK						12.33		12.68	11.59	12.52	12.12	11.72	12.26	12.17
JENE HELFRIK	TOBA	8.63	9.69	11.01	10.79	10.66	11.95	9.88	11.27	11.43	11.46	11.34	10.78	11.52	10.80
GORAN ORAŠANIN	STAJIĆEVO						12.14		11.72		12.06	11.40	11.16	11.28	11.63
BRANKO GAK	KRAJŠNIK	9.57	9.86	10.40	10.62	9.90	11.69	8.34	10.53	9.66	11.23	10.00	9.97	10.58	10.18
VUKAŠIN BAČINA	JAŠA TOMIĆ	9.26	9.67	10.23	10.34	10.04	10.64	8.97	10.36	10.16	10.29	9.93			9.99
MILAN VIGNJEVIĆ	B.VIŠNJIĆEVO	9.40	9.61	11.06	11.32	9.28	11.72	8.64	9.44	9.61	11.59				10.17
NEMANJA RACIĆ	BOKA			10.79	10.62		11.92		10.96		12.12	11.69	11.69	11.23	11.38
A. SENJI	N. BEČEJ	12.31	9.90	11.73	11.55	11.15	9.84				9.86	9.84	12.14	14.05	11.24
ŽIVAN JUNGIĆ	VELIKI GAJ	9.26	9.37	10.49	9.37	7.24	11.46	7.24	10.62	10.49	11.89	10.17	9.86	11.21	9.90
KRALJ DRAGAN	KIKINDA	10.14	8.87	10.25	11.65	10.34	12.14	8.42	12.10	10.78	11.23	11.96	12.34	11.27	10.88
COKOI ZLATOJA	ORLOVAT	9.11	9.00	12.18	11.48	10.43	12.29	8.83	10.83	10.01	11.81	10.50	10.80	10.86	10.62
PSS ZRENJANIN	ZRENJANIN	10.80		12.02	12.59		12.78			11.72	12.67	12.75	12.78	12.24	12.26
PSS KIKINDA	KIKINDA	10.09		10.40	10.55		12.20		11.54	13.66	11.51	11.53			11.44
PROSEK		9.86	9.50	10.96	10.99	9.88	11.78	8.62	11.10	10.91	11.56	11.10	11.32	11.65	10.97

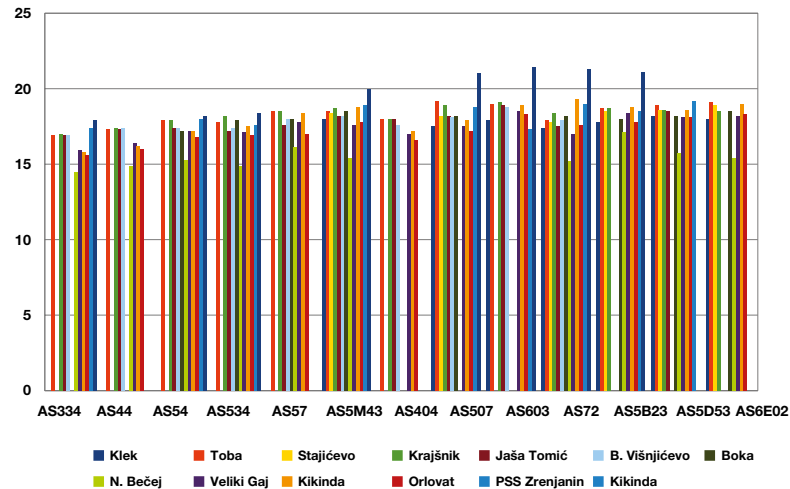
Najbolji hibrid
u ogledu

Region: Banat
Promoter: Milan Savić
Telefon: 062 88 02 417
Promoter: Danijela Šibul
Telefon: 062 80 40 254

Prinos zrna sa 14% vlage (t/ha)



Vlaga zrna u momentu berbe po hibridima i lokalitetima (%)



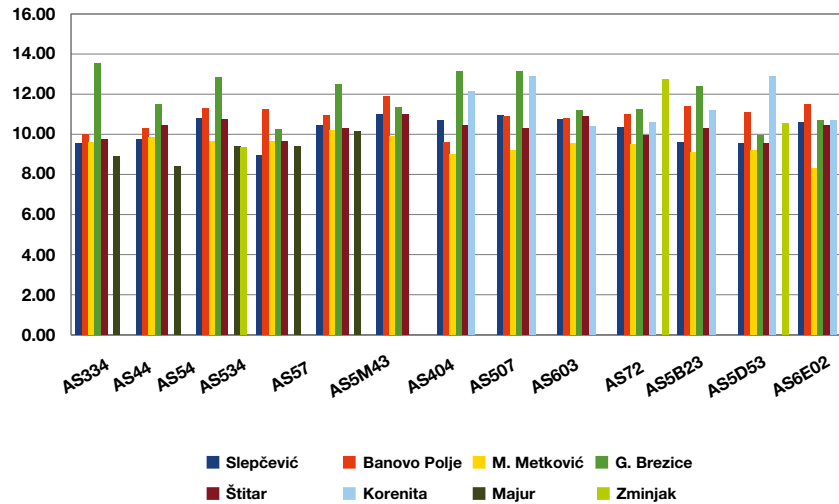
Prinos zrna po hibridima i lokalitetima sa 14 % vlage (t/ha)

PROIZVOĐAČ	LOKACIJA	HIBRID													PROSEK
		AS 334	AS 44	AS 54	AS 534	AS 57	AS 5M43	AS 404	AS 507	AS 603	AS 72	AS 5B23	AS 5D53	AS 6E02	
D. BRAJIĆ	SLEPČEVIĆ	9.53	9.75	10.77	8.96	10.46	11.00	10.67	10.94	10.75	10.34	9.58	9.57	10.60	10.22
M. LJUBINKOVIĆ	BANOVO POLJE	9.97	10.31	11.28	11.24	10.96	11.91	9.58	10.91	10.78	10.98	11.39	11.10	11.50	10.92
S. MIŠKOVIĆ	M. METKOVIĆ	9.62	9.85	9.64	9.64	10.21	9.88	8.99	9.19	9.54	9.50	9.08	9.22	8.31	9.44
NIKOLA MARIĆ	G. BREZOVICE	13.56	11.50	12.85	10.25	12.50	11.32	13.12	13.12	11.19	11.26	12.40	9.93	10.71	11.82
M. MIJAILOVIĆ	ŠTITAR	9.73	10.45	10.72	9.63	10.32	10.99	10.43	10.28	10.88	9.93	10.31	9.53	10.44	10.28
NENAD ANIČIĆ	KORENITA							12.15	12.89	10.39	10.61	11.22	12.89	10.69	11.55
V. TUFEGDŽIĆ	MAJUR	8.91	8.39	9.41	9.41	10.13									9.25
JOVAN KRSTIĆ	ZMINJAK			9.35							12.76		10.54		10.88
PROSEK		10.22	10.04	10.58	9.86	10.76	11.02	10.82	11.22	10.59	10.77	10.66	10.40	10.37	10.54

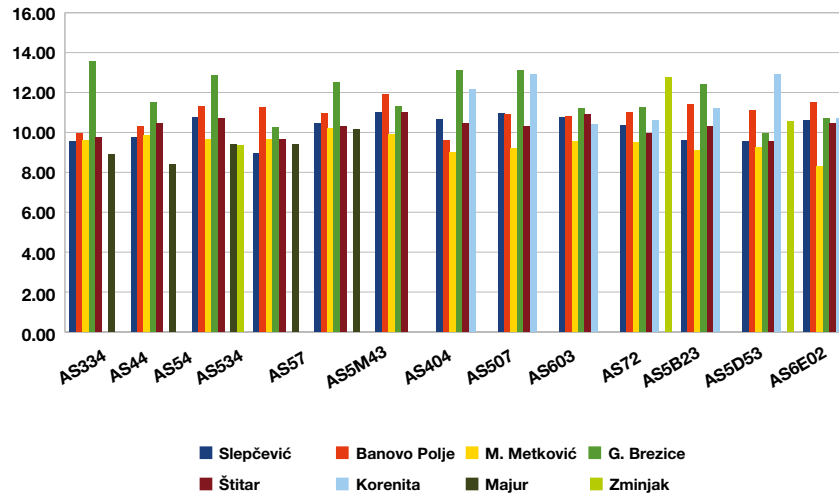
 Najbolji hibrid
u ogledu

Region: Srem, Mačva i Podrinje
Promoter: Ivan Baštovanović
Telefon: 062 80 40 246

Prinos zrna sa 14% vlage (t/ha)



Vlaga zrna u momentu berbe po hibridima i lokalitetima (%)



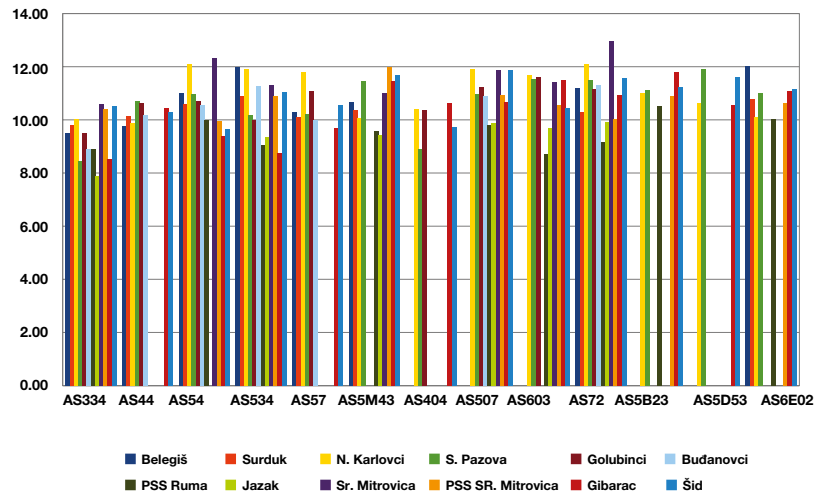
Prinos zrna po hibridima i lokalitetima sa 14 % vlage (t/ha)

PROIZVOĐAČ	LOKACIJA	HIBRID													PROSEK
		AS 334	AS 44	AS 54	AS 534	AS 57	AS 5M43	AS 404	AS 507	AS 603	AS 72	AS 5B23	AS 5D53	AS 6E02	
LIČANIN ZORAN	BELEGIŠ	9.50	9.78	11.00	11.98	10.30	10.68				11.20			12.02	10.81
J. MILAN	SURDUK	9.79	10.13	10.58	10.88	10.10	10.37				10.29			10.78	10.37
LUKAČ GORAN	N. KARLOVCI	10.01	9.87	12.10	11.90	11.79	10.05	10.40	11.89	11.68	12.09	10.99	10.64	10.11	11.04
BALAŽ MIHAL	S. PAZOVA	8.43	10.69	10.98	10.19	10.21	11.47	8.88	10.97	11.55	11.49	11.11	11.91	11.01	10.68
LAZIĆ SRĐAN	GOLUBINCI	9.49	10.64	10.71	9.99	11.09		10.35	11.25	11.59	11.14				10.69
B. DRAGOLJUB	BUĐANOVC	8.90	10.17	10.57	11.27	9.98			10.91		11.31				10.44
PSS RUMA	PSS RUMA	8.90		10.00	9.04		9.57		9.80	8.73	9.16	10.53		10.02	9.53
GRUJIĆ ILIJA	JAZAK	7.90			9.34		9.43		9.89	9.70	9.90				9.36
A. LALE	SR. MITROVICA	10.58		12.31	11.32		11.02		11.87	11.41	12.97				11.64
PSS SR. MITROVICA	PSS SR. MITROVICA	10.39		9.97	10.88		11.98		10.92	10.57	10.03	10.90		10.64	10.70
A. DRAGAN	GIBARAC	8.52	10.46	9.38	8.75	9.69	11.46	10.62	10.67	11.49	10.93	11.80	10.57	11.09	10.42
Š. RADOVAN	ŠID	10.53	10.30	9.66	11.06	10.54	11.69	9.71	11.88	10.44	11.58	11.25	11.62	11.16	10.88
PROSEK		9.41	10.25	10.66	10.55	10.46	10.77	9.99	11.01	10.80	11.01	11.10	11.19	10.85	10.55

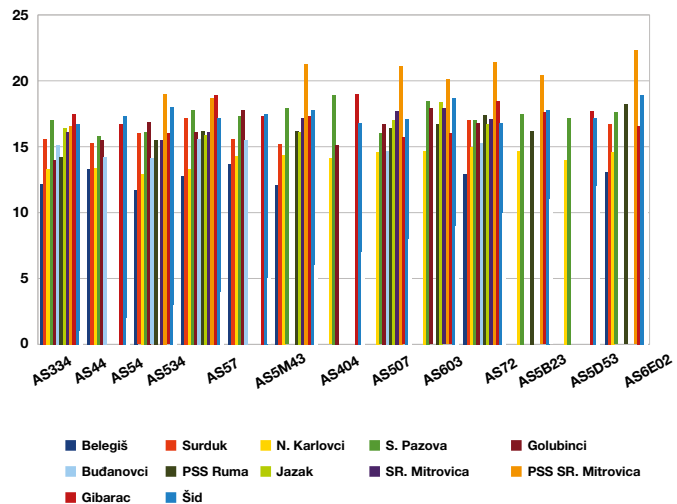
Najbolji hibrid
u ogledu

Region: Srem, Mačva i Podrinje
Promoter: Miloš Ekmedžić
Telefon: 062 80 40 249

Prinos zrna sa 14% vlage (t/ha)



Vlaga zrna u momentu berbe po hibridima i lokalitetima (%)



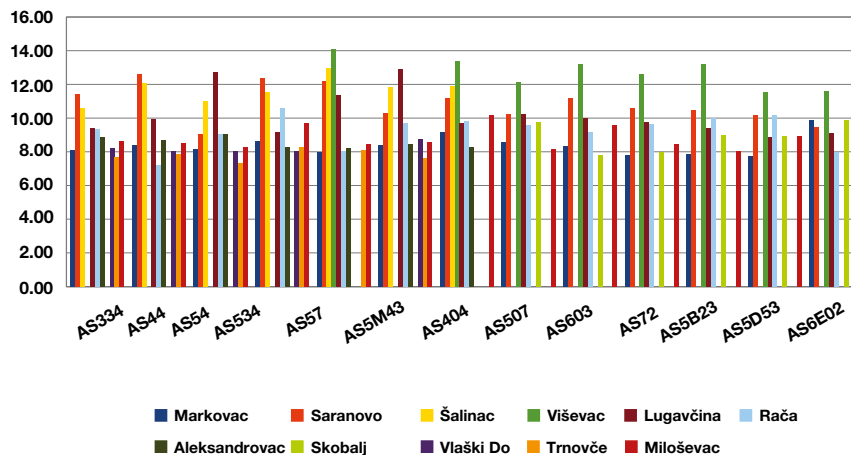
Prinos zrna po hibridima i lokalitetima sa 14 % vlage (t/ha)

PROIZVOĐAČ	LOKACIJA	HIBRID													PROSEK
		AS 334	AS 44	AS 54	AS 534	AS 57	AS 5M43	AS 404	AS 507	AS 603	AS 72	AS 5B23	AS 5D53	AS 6E02	
P. PETROVIĆ	MARKOVAC	8.07	8.41	8.13	8.64	8.00	8.38	9.18	8.58	8.34	7.82	7.84	7.73	9.87	8.38
Z. IVOŠEVIĆ	SARANOVO	11.43	12.59	9.07	12.39	12.17	10.27	11.21	10.26	11.18	10.61	10.46	10.16	9.47	10.87
DEJAN SAVIĆ	ŠALINAC	10.56	12.06	10.98	11.56	12.97	11.86	11.91							11.70
A. VUKIĆEVIĆ	VIŠEVAC					14.10		13.37	12.15	13.21	12.63	13.23	11.52	11.63	12.73
J. GLIŠIĆ I B. DAVIDOVIĆ	LUGAVČINA	9.38	9.91	12.72	9.14	11.35	12.91	9.69	10.22	10.00	9.74	9.38	8.90	9.13	10.19
NENAD BOŽIĆ	RAČA	9.32	7.21	9.06	10.57	8.01	9.72	9.80	9.59	9.14	9.66	9.97	10.16	7.99	9.24
D. GRUJIĆ	ALEKSANDROVAC	8.87	8.69	9.05	8.26	8.22	8.48	8.28							8.55
Z. JAKOVLJEVIĆ	SKOBALJ								9.75	7.79	8.00	8.98	8.94	9.87	8.89
MILAN BABANIĆ	VLAŠKI DO	8.19	8.04	8.02	8.06		8.77								8.22
SAŠA ŠULEJIĆ	TRNOVČE	7.66	7.87	7.34	8.26	8.11	7.63								7.81
Ž. BOGDANOVIĆ	MILOŠEVAC	8.64	8.53	8.28	9.68	8.43	8.57	10.18	8.13	9.58	8.48	8.06	8.93	9.36	8.83
PROSEK		9.12	9.26	9.18	9.62	10.15	9.62	10.45	9.81	9.89	9.56	9.70	9.48	9.62	9.58

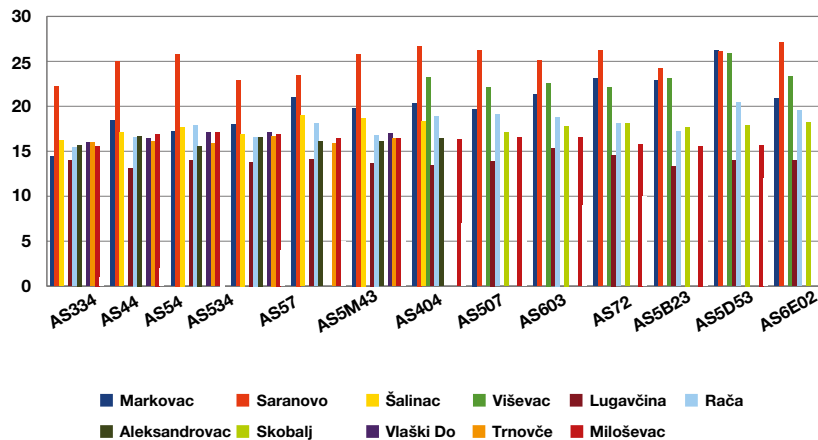
Najbolji hibrid
u ogledu

Region: Braničevo i Podunavlje
Promoter: Ivan Jovanović
Telefon: 062 80 40 250

Prinos zrna sa 14% vlage (t/ha)




Vlaga zrna u momentu berbe po hibridima i lokalitetima (%)



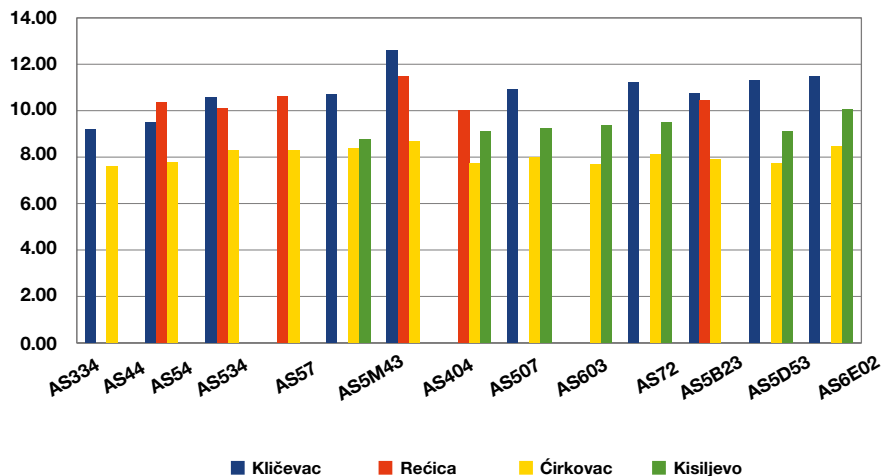
Prinos zrna po hibridima i lokalitetima sa 14 % vlage (t/ha)

PROIZVOĐAČ	LOKACIJA	HIBRID													PROSEK
		AS 334	AS 44	AS 54	AS 534	AS 57	AS 5M43	AS 404	AS 507	AS 603	AS 72	AS 5B23	AS 5D53	AS 6E02	
MIODRAG VASIĆ	KLIČEVAC	9.20	9.49	10.57		10.71	12.59		10.90		11.22	10.76	11.29	11.46	10.82
G. VASILJEVIĆ	REČICA		10.34	10.10	10.62		11.47	10.02				10.44			10.50
J. ŽIVKOVIĆ	ĆIRIKOVAC	7.61	7.79	8.30	8.28	8.38	8.68	7.71	7.99	7.70	8.11	7.89	7.74	8.44	8.05
RADIŠA PANTIĆ	KISILJEVO					8.76		9.09	9.24	9.38	9.49		9.10	10.07	9.30
PROSEK		8.41	9.21	9.66	9.45	9.28	10.91	8.94	9.38	8.54	9.61	9.70	9.38	9.99	9.67

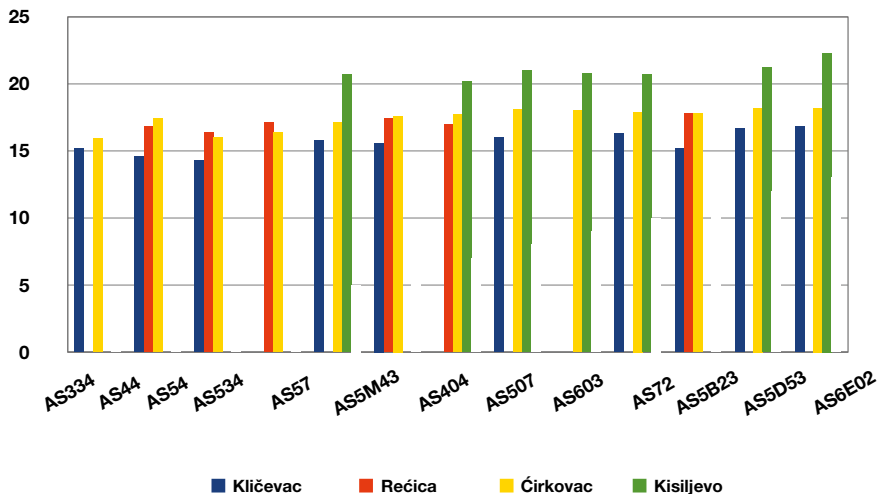
 Najbolji hibrid
u ogledu

Region: Braničevo i Podunavlje
Promoter: Jugoslav Đurđević
Telefon: 063 379 313

Prinos zrna sa 14% vlage (t/ha)



Vlaga zrna u momentu berbe po hibridima i lokalitetima (%)



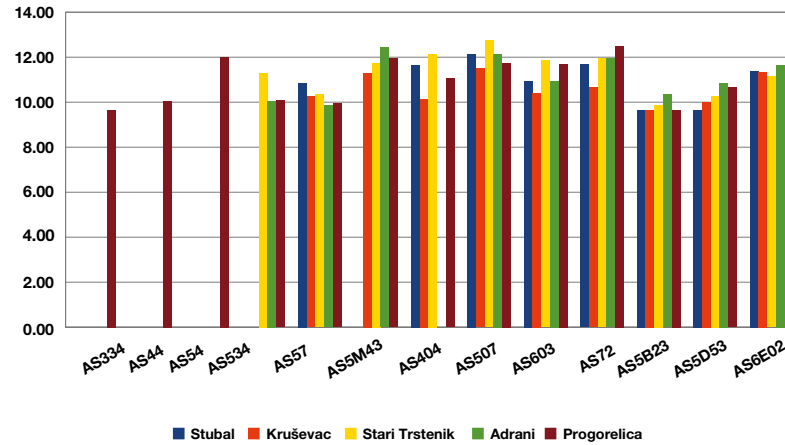
Prinos zrna po hibridima i lokalitetima sa 14 % vlage (t/ha)

PROIZVOĐAČ	LOKACIJA	HIBRID													PROSEK
		AS 334	AS 44	AS 54	AS 534	AS 57	AS 5M43	AS 404	AS 507	AS 603	AS 72	AS 5B23	AS 5D53	AS 6E02	
Z. KOSTOVIĆ	STUBAL					10.85		11.65	12.15	10.95	11.68	9.65	9.65	11.38	11.00
M. VUČIĆEVIĆ	KRUŠEVAC					10.25	11.30	10.15	11.50	10.40	10.65	9.65	10.00	11.35	10.58
DEJAN TOMIĆ	STARI TRSTENIK				11.30	10.35	11.75	12.15	12.75	11.85	11.95	9.87	10.28	11.15	11.34
M. ERČEVIĆ	ADRANI				10.05	9.86	12.42		12.15	10.95	11.95	10.35	10.85	11.65	11.14
R. ZLATIĆ	PROGORELICA	9.65	10.05	12.00	10.08	9.95	11.95	11.05	11.75	11.70	12.50	9.65	10.65	10.50	10.88
PROSEK		9.65	10.05	12.00	10.48	10.25	11.86	11.25	12.06	11.17	11.75	9.83	10.29	11.21	10.99

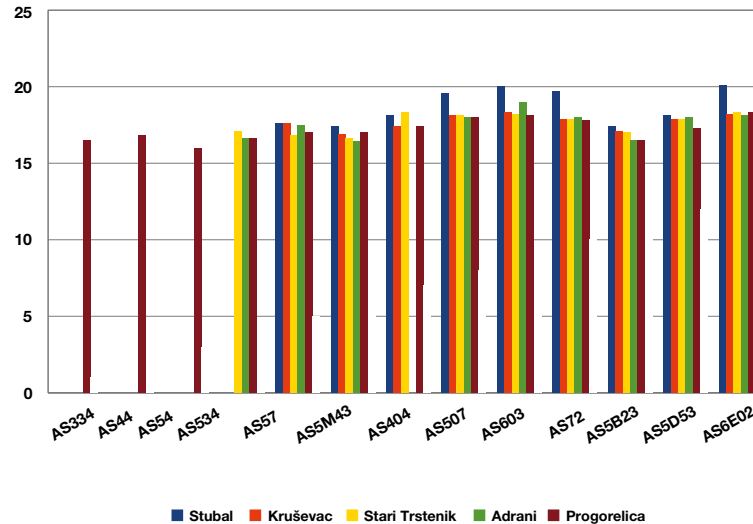
Najbolji hibrid
u ogledu

Region: Centralna Srbija
Promoter: Marko Mihajlović
Telefon: 063 112 68 43

Prinos zrna sa 14% vlage (t/ha)



Vlaga zrna u momentu berbe po hibridima i lokalitetima (%)



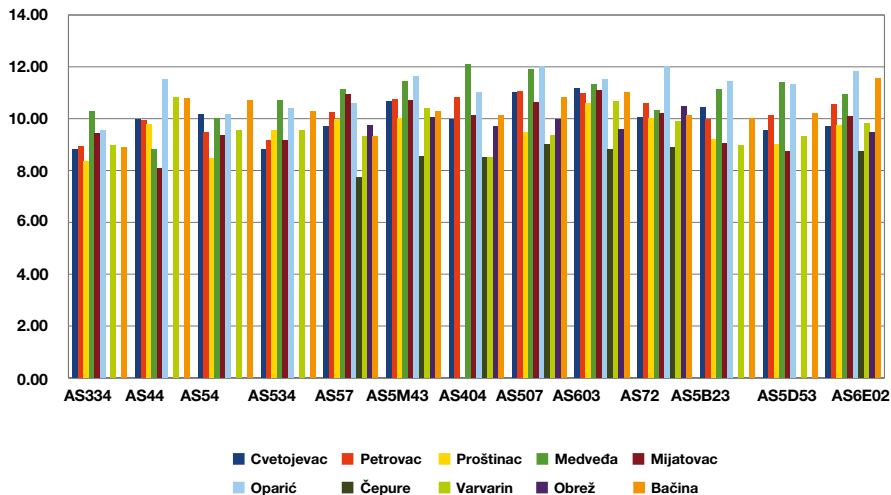
Prinos zrna po hibridima i lokalitetima sa 14 % vlage (t/ha)

PROIZVOĐAČ	LOKACIJA	HIBRID													PROSEK
		AS 334	AS 44	AS 54	AS 534	AS 57	AS 5M43	AS 404	AS 507	AS 603	AS 72	AS 5B23	AS 5D53	AS 6E02	
STANJIĆ MILE	CVETOJEVAC	8.81	9.99	10.18	8.83	9.70	10.65	9.96	11.01	11.15	10.04	10.42	9.56	9.72	10.00
MILETIĆ SLAVOLJUB	PETROVAC	8.94	9.95	9.48	9.14	10.23	10.75	10.81	11.07	10.99	10.60	9.97	10.14	10.55	10.20
TOMIĆ SRĐAN	PROŠTINAC	8.36	9.77	8.46	9.55	9.99	10.02		9.46	10.59	10.02	9.22	9.00	9.74	9.51
RADISAVLJEVIĆ RADIŠA	MEDVEDA	10.28	8.80	10.03	10.69	11.14	11.44	12.10	11.89	11.32	10.33	11.15	11.39	10.94	10.88
ALEKSIĆ PREDRAG	MIJATOVAC	9.45	8.10	9.34	9.14	10.95	10.70	10.13	10.64	11.08	10.22	9.05	8.75	10.09	9.82
POPOVIĆ MIROLJUB	OPARIĆ	9.55	11.50	10.15	10.41	10.60	11.62	11.03	12.04	11.52	12.01	11.45	11.31	11.81	11.15
PERIĆ BOJAN	ČEPURE					7.74	8.55	8.52	9.00	8.80	8.88			8.73	8.60
ŽIVANOVIĆ DRAGAN	VARVARIN	8.98	10.84	9.54	9.54	9.34	10.41	8.50	9.34	10.65	9.90	8.97	9.30	9.83	9.63
DRAGAN ČABRIĆ	OBREŽ					9.74	10.05	9.70	9.97	9.59	10.48			9.48	9.86
ŽIVANOVIĆ ŽIVOTA	BAČINA	8.90	10.77	10.69	10.29	9.31	10.30	10.13	10.82	11.02	10.14	9.99	10.19	11.57	10.32
PROSEK		9.16	9.96	9.73	9.70	9.87	10.45	10.10	10.52	10.67	10.26	10.03	9.95	10.25	10.00

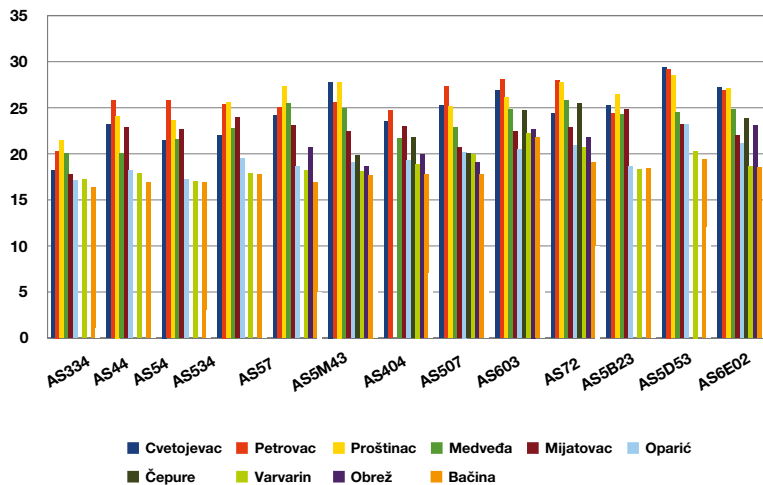
Najbolji hibrid
u ogledu

Region: Centralna Srbija
Promoter: Nenad Prgomet
Telefon: 063 379 004

Prinos zrna sa 14% vlage (t/ha)



Vlaga zrna u momentu berbe po hibridima i lokalitetima (%)



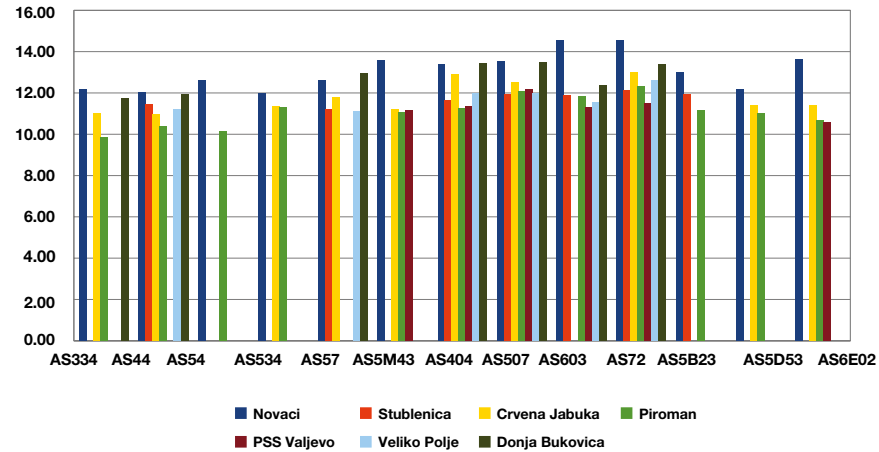
Prinos zrna po hibridima i lokalitetima sa 14 % vlage (t/ha)

PROIZVOĐAČ	LOKACIJA	HIBRID													PROSEK
		AS 334	AS 44	AS 54	AS 534	AS 57	AS 5M43	AS 404	AS 507	AS 603	AS 72	AS 5B23	AS 5D53	AS 6E02	
S. VEROLJUB	NOVACI	12.15	12.02	12.60	11.97	12.63	13.59	13.40	13.54	14.53	14.55	12.98	12.17	13.61	13.06
A. MLADEN	STUBLENICA		11.47			11.22		11.64	11.91	11.89	12.13	11.93			11.74
R. SLAVIŠA	CRVENA JABUKA	11.01	10.98		11.35	11.79	11.21	12.91	12.54		13.00		11.40	11.40	11.76
M. ZORAN	PIROMAN	9.87	10.40	10.13	11.30		11.09	11.23	12.06	11.82	12.31	11.17	11.00	10.70	11.09
PSS VALJEVO	PSS VALJEVO						11.15	11.34	12.17	11.31	11.52			10.56	11.34
S. DRAGIŠA	VELIKO POLJE		11.21			11.12		11.96	12.00	11.54	12.60				11.74
T. DARKO	D. BUKOVICA	11.76	11.92			12.96		13.42	13.50	12.37	13.37				12.76
PROSEK		11.20	11.33	11.36	11.54	11.94	11.76	12.27	12.53	12.24	12.78	12.03	11.52	11.57	11.93

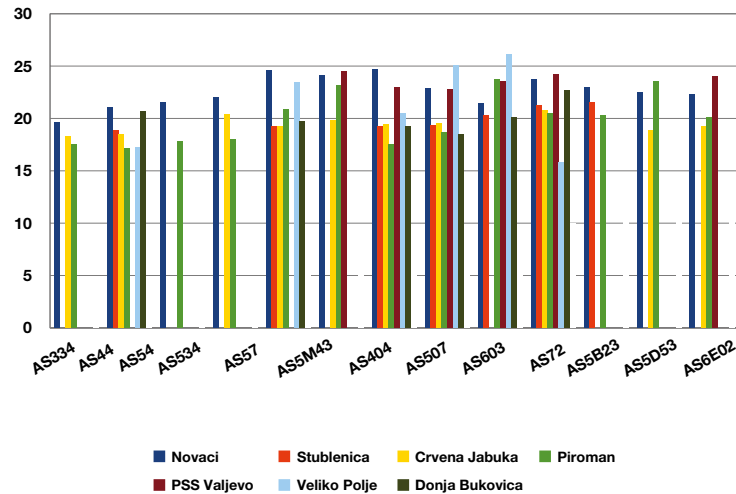
Najbolji hibrid
u ogledu

Region: Centralna Srbija
Promoter: Slavica Beljinac
Telefon: 062 80 40 244

Prinos zrna sa 14% vlage (t/ha)



Vlaga zrna u momentu berbe po hibridima i lokalitetima (%)



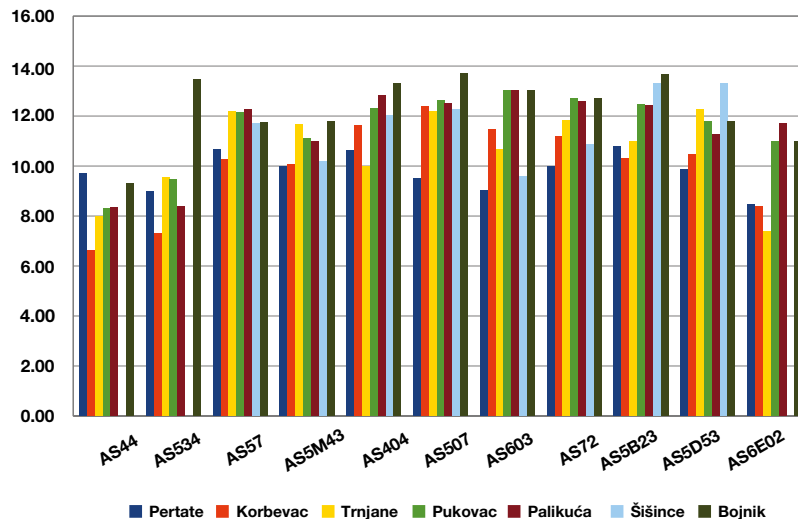
Prinos zrna po hibridima i lokalitetima sa 14 % vlage (t/ha)

PROIZVOĐAČ	LOKACIJA												PROSEK
		AS 44	AS 534	AS 57	AS 5M43	AS 404	AS 507	AS 603	AS 72	AS 5B23	AS 5D53	AS 6E02	
DUŠAN IVKOVIĆ	PERTATE	9.71	8.97	10.65	10.00	10.62	9.49	9.02	9.97	10.80	9.85	8.48	9.78
TASIĆ GORAN	KORBEVAC	6.61	7.29	10.25	10.06	11.63	12.40	11.45	11.19	10.29	10.44	8.40	10.00
ILIĆ LJUBIŠA	TRNJANE	7.96	9.56	12.19	11.65	9.98	12.19	10.65	11.81	10.96	12.25	7.40	10.60
J. PETAR	PUKOVAC	8.31	9.46	12.14	11.12	12.31	12.62	13.01	12.72	12.45	11.79	10.96	11.53
C. IVAN	PALIKUĆA	8.32	8.40	12.26	10.97	12.84	12.52	13.01	12.58	12.41	11.28	11.71	11.48
CENIĆ IVAN	ŠIŠINCE			11.72	10.19	12.01	12.27	9.59	10.87	13.31	13.31		11.66
S. VLADICA	BOJNIK	9.31	13.46	11.74	11.79	13.31	13.72	13.01	12.72	13.65	11.79	10.96	12.31
PROSEK		8.37	9.52	11.57	10.83	11.81	12.17	11.39	11.69	11.98	11.53	9.65	11.05

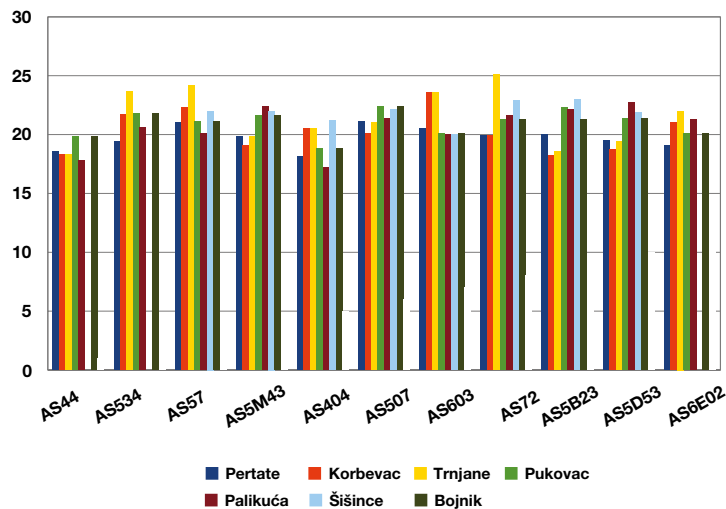
Najbolji hibrid
u ogledu

Region: Istočna i Južna Srbija
Promoter: Ivan Špakovski
Telefon: 063 379 102

Prinos zrna sa 14% vlage (t/ha)



Vlaga zrna u momentu berbe po hibridima i lokalitetima (%)



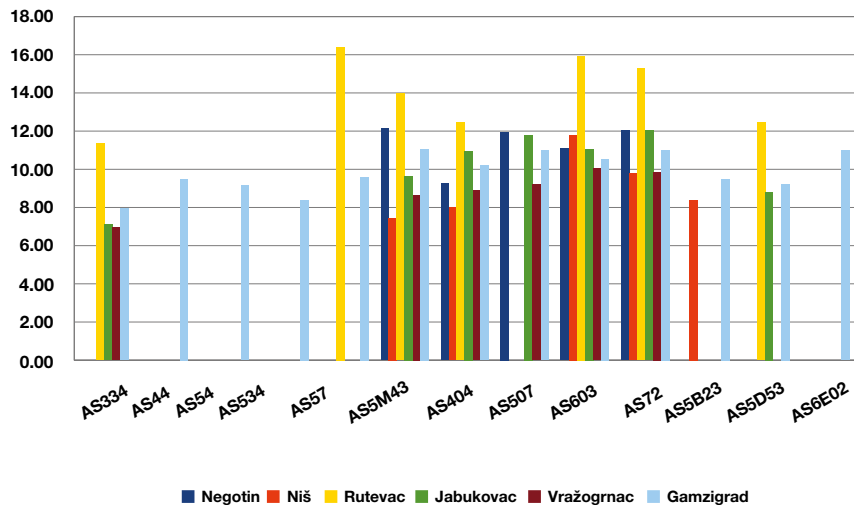
Prinos zrna po hibridima i lokalitetima sa 14 % vlage (t/ha)

PROIZVOĐAČ	LOKACIJA	HIBRID													PROSEK
		AS 334	AS 44	AS 54	AS 534	AS 57	AS 5M43	AS 404	AS 507	AS 603	AS 72	AS 5B23	AS 5D53	AS 6E02	
PSS NEGOTIN	NEGOTIN						12.15	9.26	11.94	11.10	12.04				11.30
PSS NIŠ	NIŠ						7.44	8.00		11.80	9.77	8.40			9.08
G. DRAGOMIR	RUTEVAC	11.35				16.40	13.97	12.45		15.93	15.29		12.46		13.98
D DRAGAN	JABUKOVAC	7.10					9.65	10.95	11.80	11.05	12.02		8.80		10.20
ĐOKIĆ DRAGAN	VRAŽOGRNAC	6.95					8.65	8.89	9.20	10.05	9.86				8.93
S. MILAN	GAMZIGRAD	7.94	9.48	9.14	8.40	9.60	11.07	10.20	10.99	10.55	11.02	9.49	9.23	10.99	9.85
PROSEK		8.34	9.48	9.14	8.40	13.00	10.49	9.96	10.98	11.75	11.67	8.95	10.16	10.99	10.56

Najbolji hibrid
u ogledu

Region: Istočna i Južna Srbija
Promoter: Slobodan Sibinović
Telefon: 063 486 164

Prinos zrna sa 14% vlage (t/ha)



Vlaga zrna u momentu berbe po hibridima i lokalitetima (%)

